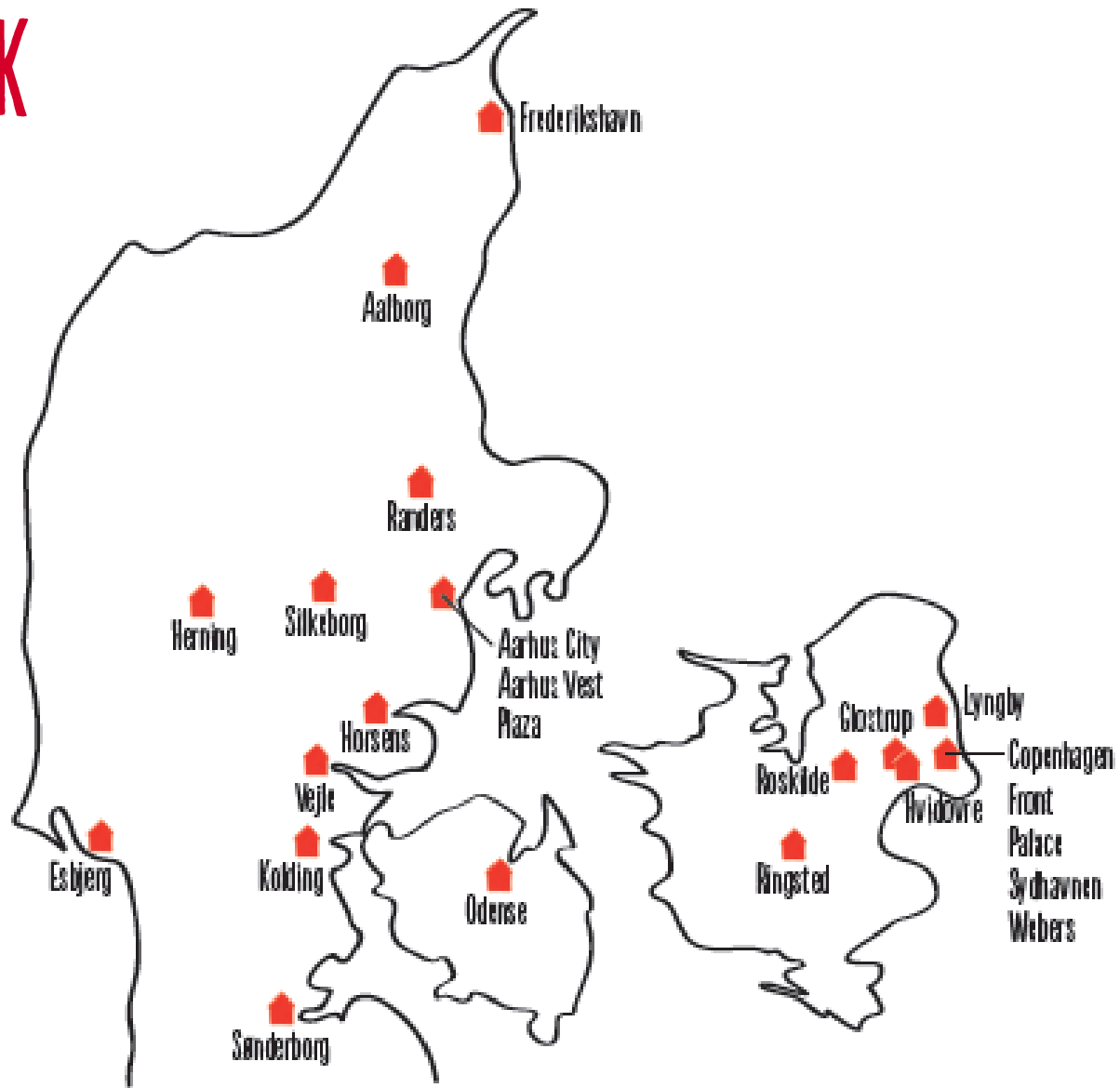


OUR HOTELS



Scandic

DENMARK



Scandic

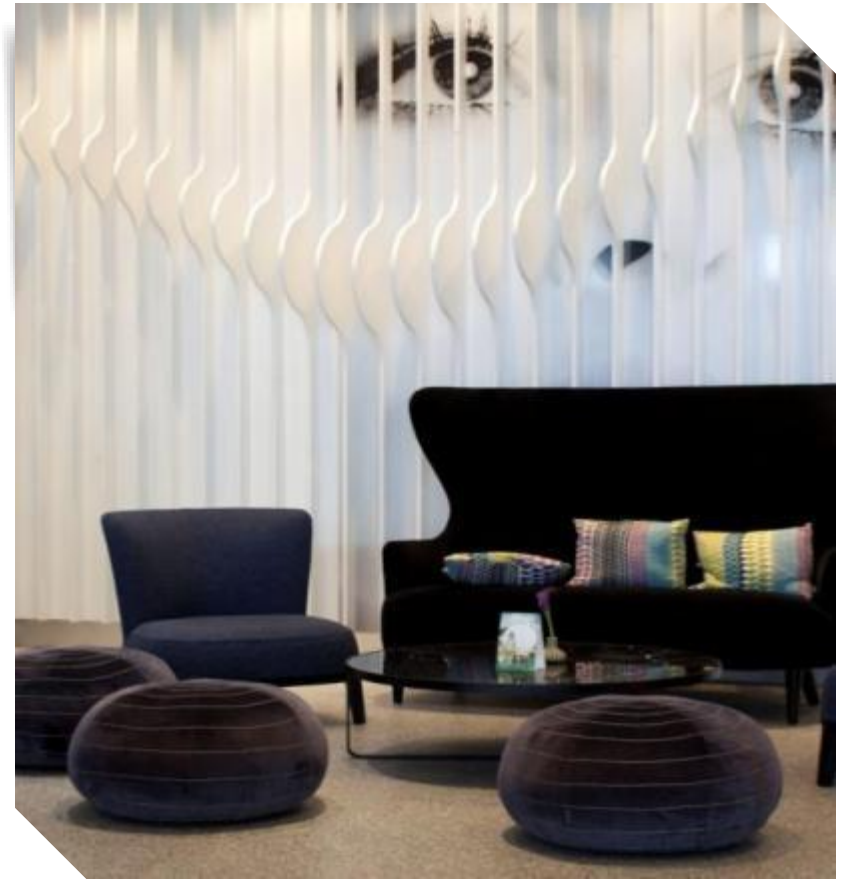
SCANDIC COPENHAGEN

Facts

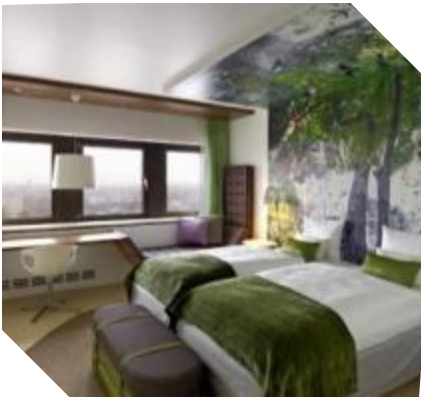
- 486 rooms
- Banquet capacity: 840 pers
- Exhibition area
- Meeting and conference facilities up to 1.100 pers

Location

- Located in the heart of Copenhagen with a beautiful view of the lakes and the roofs of the city
- 500 m from the central station
- Parking facilities (fee applies)



SCANDIC COPENHAGEN



NAME	DAY-LIGHT	M2	BOARD ROOM	U-SHAPE	CLASS ROOM	ROUND	THEATRE
1. Christian	YES	70		26	40	48	60
2. Frederik	YES	70		26	40	48	60
3. Margrethe 1	NO	35			12	12	20
4. Margrethe 2	YES	35			18	12	20
5. Margrethe 1+2	YES	70		26	40	48	60
6. Hamlet	YES	22	8				
7. Think Tank	NO	38	12				
8. Grand Ball	NO	223		56	140	192	250
9. Amalienborg	NO	193		50	120	144	200
10. Christiansborg	NO	100		30	60	96	90
11. Fredensborg	NO	100		30	60	96	90
12. Kronborg	NO	100		30	60	96	90
13. Schackenborg	NO	100		30	60	96	90
14. Rosenborg	NO	100		30	60	96	90
15. Marselisborg	NO	100		30	60	96	90
16. Børsen	NO	72	20			96	
17. Topfloor	YES	40	14				
Grand Ball Complex	NO	1064			710	840	1100



SCANDIC FRONT, COPENHAGEN

Facts

- 132 rooms
- Meeting and conference facilities up to 60 pers
- Banquet capacity: 90 pers
- Parking for a fee

Location

- A trendy and modern hotel close to the historic Nyhavn and Copenhagen Harbour



SCANDIC FRONT, COPENHAGEN



NAME	DAY-LIGHT	M2	BOARD ROOM	U-SHAPE	CLASS ROOM	THEATRE
1. Boardroom	YES	36	10			15
2. Skuespillerhuset	YES	43	18	15	20	24
3. Opera	YES	34	18	15	18	24
Opera + Skuespillerhuset	YES	78	40	30	44	60



PALACE HOTEL COPENHAGEN

Facts

- 161 rooms
- Meeting and conference facilities up to 70 pers
- Banquet capacity: 60 pers
- Parking for a fee
- Preferred Hotel Group

Location

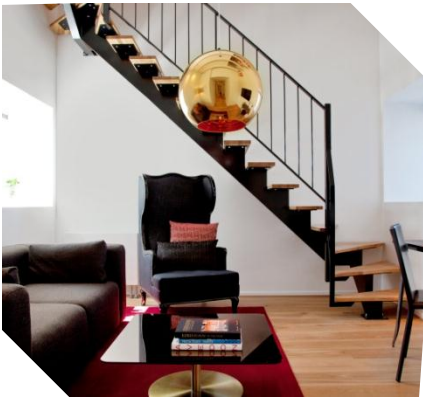
- Unique location at the Town Hall Square and close to Strøget
- Nordic modern style with a historic touch



PALACE HOTEL COPENHAGEN



NAME	DAY-LIGHT	M2	BOARD ROOM	U-SHAPE	CLASS ROOM	THEATRE
1. Flora Danica 1	YES	85	23	26	36	70
2. Flora Danica 2	YES	25	14			12
3. Flora Danica 3	YES	35	14	14	12	20



SCANDIC WEBERS, COPENHAGEN

Facts

- 152 rooms
- Meeting and conference facilities up to 30 pers
- Parking for a fee

Location

- Located in the heart of the city next to the central train station and close to Tivoli and "Strøget".



SCANDIC WEBERS, COPENHAGEN



NAME	DAY-LIGHT	M2	BOARD ROOM	U-SHAPE	CLASS ROOM	THEATRE
1. Østerbro	YES	18	8		8	
2. Nørrebro	YES	24	10	12	12	10
3. Vesterbro	YES	42	20	18	20	30



SCANDIC SYDHAVNEN, COPENHAGEN

Facts

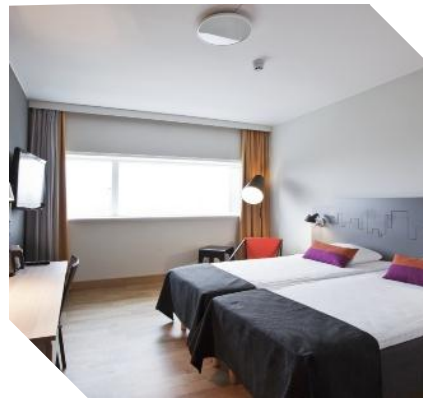
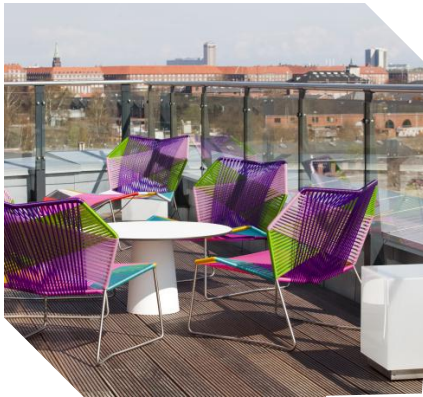
- 391 rooms
- Meeting and conference facilities up to 400 pers
- Banquet capacity 350 pers
- Free parking
- Daylight in all meeting rooms
- Outdoor roof top spa

Location

- Located just 10 minutes from Copenhagen Airport and 5 minutes from city centre
- Close to train station



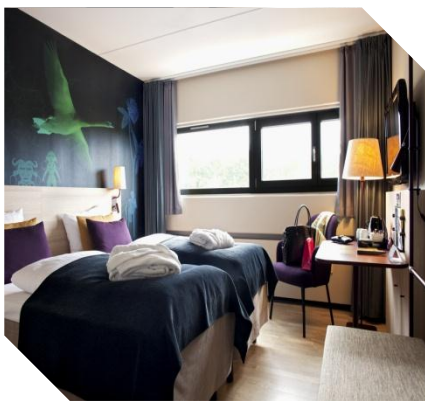
SCANDIC SYDHAVNEN, COPENHAGEN



NAME	DAY-LIGHT	M2	BOARD ROOM	U-SHAPE	CLASS ROOM	THEATRE
1	YES	143		40	108	120
2	YES	112		40	90	100
3	YES	111		40	90	100
1 + 2	YES	250		50	140	236
2 + 3	YES	224		44	126	210
1 + 2 + 3	YES	371		72	208	350
4	YES	28	12	12	16	20
5	Rooflight	27	12	12	16	20
6	YES	20	10			10
7	YES	50	18	20	32	45
8	YES	28	12	12	16	20
9	YES	28	12	12	16	20
7 + 8	YES	78	26	22	50	66
8 + 9	YES	56	20	16	36	46
7 + 8 + 9	YES	107		30	70	90
10	YES	32	12			
11	YES	16	8			8
12	YES	17	8			8
13	YES	19	10			10
12 + 13	YES	36	14	14	16	18
14	YES	21	10			10
15	YES	23	10			10
14 + 15	YES	44	16	16	18	20



SCANDIC HVIDOVRE



Scandic

SCANDIC HVIDOVRE

Facts

- 207 rooms
- Meeting and conference facilities for up to 300 pers
- Banquet capacity 350 pers
- Free parking
- Renovated rooms and ground floor in 2012
- Swimming pool and sauna

Location

- 8 km from Copenhagen city centre
- 15 km from Copenhagen Airport
- 1 km from trainstation



NAME	DAY-LIGHT	M2	U-SHAPE	CLASS ROOM	THEATRE
1. Stockholm 1	YES	65	20	34	50
2. Stockholm 2	YES	65	20	34	50
3. Stockholm 3	YES	85	24	44	60
Stockholm 2 + 3	YES	150	26	70	130
Stockholm 1 + 2 + 3	YES	215		100	200
4. Oslo 4	YES	95	30	60	80
5. Oslo 5	YES	95	30	60	80
6. Oslo 6	YES	95	30	60	80
Oslo 4 + 5	YES	190		120	180
Oslo 4 + 5 + 6	YES	285		180	300
9. København 9	YES	18		12	12
10. København 10	YES	18		12	12
11. København 11	YES	18		12	12
12. København 12	YES	18		12	12
13. København 13	YES	18		12	12
14. København 14	YES	18		12	12
15. København 15	YES	18		12	12
16. København 16	YES	18		12	12
17. Riga	YES	20		12	12
18. København 18	YES	20		12	12
19. København 19	YES	20		12	12
20. København 20	YES	20		12	12
København 9 + 10	YES	36	12	18	25
København 11 + 12	YES	36	12	18	25
København 13 + 14	YES	36	12	18	25
København 15 + 16	YES	36	12	18	25



SCANDIC EREMITAGE, LYNGBY

Facts

- 120 rooms
- Meeting and conference facilities up to 216 pers
- Banquet capacity 300 persons
- Parking for a fee

Location

- Centrally located in Lyngby Shopping Centre, 5 km from the beach and close to beautiful nature



SCANDIC EREMITAGE, LYNGBY



NAME	DAY-LIGHT	M2	BOARD ROOM	U-SHAPE	CLASS ROOM	THEATRE
1. Ulvedalen	YES	67		18	40	50
2. Ulvedalen 2	YES	90		25	46	80
Ulvedalen 1 + 2	YES	156		40	80	149
3. Hjortekilden 1	YES	103		30	54	90
4. Hjortekilden 2	YES	89		28	50	80
Hjortekilden 1 + 2	YES	191			130	216
5. Eremitage Sletten	YES	35		10	15	25
6. Dyrehaven 1	YES	28	12			
7. Dyrehaven 2	YES	24	12			
Dyrehaven 1 + 2	YES	52		18	20	45
8. Præstesletten	YES	15	6			
9. Hvidtjørnesletten	YES	15	6			
10. Ermelunden 1	YES	32				18
11. Ermelunden 2	YES	51		16	20	50
12. Ermelunden 3	YES	52		16	20	50
Ermelunden 1 + 2	YES	95		30	50	80
Ermelunden 2 + 3	YES	103		90	56	90
Ermelunden 1 + 2 + 3	YES	146			80	149
13. Hubertus	YES	20	10			
14. Skovriddergård	YES	10	4			
15. Grevindebakken	YES	20	10			



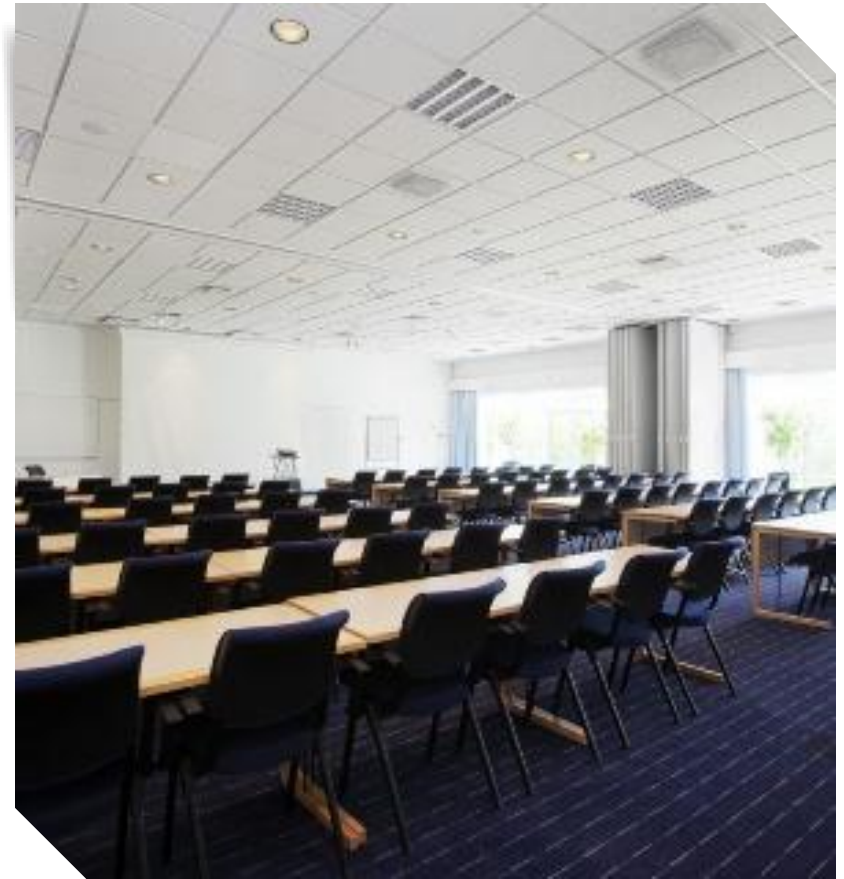
SCANDIC GLOSTRUP

Facts

- 120 rooms
- Meeting and conference facilities up to 210 pers
- Banquet capacity 150 pers
- Free parking

Location

- Located in the West part of Copenhagen and only 10 km from Copenhagen City.



SCANDIC GLOSTRUP



NAME	DAY-LIGHT	M2	BOARD ROOM	U-SHAPE	CLASS ROOM	ISLAND	THEATRE
1. Thor	YES	100		30	60	36	85
2. Odin	YES	100		30	60	36	85
Odin + Thor	YES	200		40	120		210
3. Balder	YES	19	10		12		15
4. Freja	YES	19	10		12		15
5. Mimer	YES	15	10				
Mimer + Freja	YES	34	20	14	18		24



SCANDIC ROSKILDE

Facts

- 98 rooms
- Meeting and conference facilities up to 280 pers
- Banquet capacity 150 pers
- Free parking

Location

- Located in the beautiful Roskilde Ring Park just 5 minutes from the city centre of Roskilde and 30 minutes from Copenhagen.



Scandic

SCANDIC ROSKILDE



NAME	DAY-LIGHT	M2	BOARD ROOM	U-SHAPE	CLASS ROOM	THEATRE
1. Christian I	YES	39		12	18	
2. Christian II	YES	18	10			
3. Christian III	YES	18	10			
4. Christian IV	YES	18	10			
Christian II + III + IV	YES	54		18	22	
5. Christian V	YES	45		14	20	
6. Christian VI	YES	45		14	20	
Christian V + VI	YES	90		28	50	80
7. Christian VII	YES	14	10			
8. Christian VIII	YES	29	14	10	12	
9. Christian IX	YES	14	10			
10. Frederik II	YES	8	6			
11. Margrethe I	YES	114		30	70	100
12. Margrethe II	YES	246		50	120	160
Margrethe I + II	YES	360			175	280



SCANDIC RINGSTED

Facts

- 75 rooms
- Meeting and conference facilities up to 180 pers
- Banquet capacity 100 pers
- Free parking

Location

- Situated in the middle of Zeeland just a small walk from Ringsted city centre



SCANDIC RINGSTED



NAME	DAY-LIGHT	M2	BOARD ROOM	U-SHAPE	CLASS ROOM	THEATRE
1. Figaro	YES	98	35	36	60	90
2. Othello	YES	49	20	20	25	45
3. Carmen	YES	49	20	20	25	45
Figaro + Othello + Carmen	YES	196			110	180
4. Verdi	YES	65	20	20	25	45
5. Grupperum 1	YES	20	12			
6. Grupperum 2	YES	20	12			
7. Grupperum 3	YES	20	12			
8. Grupperum 4	YES	20	12			



SCANDIC ODENSE

Facts

- 100 rooms
- Meeting and conference facilities up to 220 pers
- Banquet capacity 220 pers
- Free parking

Location

- Close to the historic city of Odense



Scandic

SCANDIC ODENSE



NAME	DAY-LIGHT	M2	BOARD ROOM	U-SHAPE	CLASS ROOM	THEATRE
1. Dallum	YES	112	30	36	70	100
2. Hjallese	YES	112	30	36	70	100
Dallum + Hjallese	YES	224	16	72	170	220
3. Rikkesminde	YES	50	32	20	26	40
4. Elseminde	YES	50	16	20	26	80
Rikkesminde + Elseminde	YES	100	24	40	50	
5. Fruens Bøge	YES	80		30	50	70
6. Bellinge 1	YES	21	12			
7. Bellinge 2	YES	21	12			
Bellinge 1 + 2	YES	42	24	18	26	40
8. Højme 1	YES	21	12			
9. Højme 2	YES	21	12			
Højme 1 + 2	YES	42	24	18	26	40
10. Sanderum	YES	18	8			
11. Dyrup	YES	18	8			
12. Grupperum 130	YES	12	4			
13. Grupperum 132	YES	12	4			
14. Grupperum 134	YES	12	4			
15. Grupperum 136	YES	12	4			
16. Grupperum 137	YES	12	4			



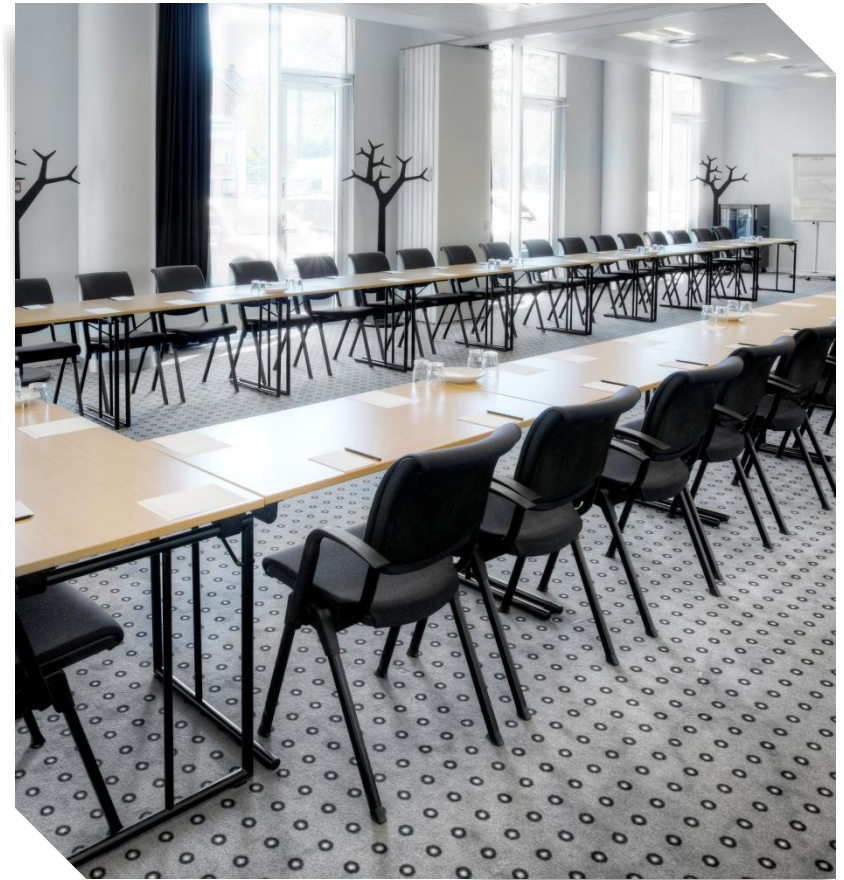
SCANDIC JACOB GADE, VEJLE

Facts

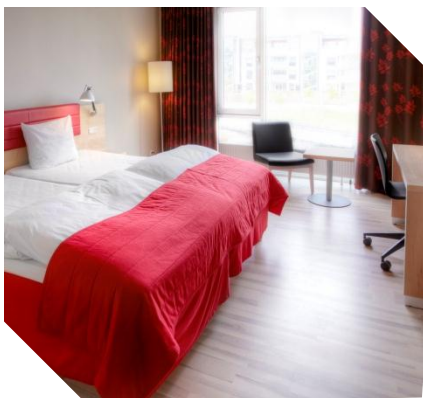
- 129 rooms
- Meeting and conference facilities up to 280 pers
- Banquet capacity 252 pers
- Free parking w. ticket

Location

- Located in central Vejle, close to shopping and restaurants



SCANDIC JACOB GADE, VEJLE



NAME	DAY-LIGHT	M2	BOARD ROOM	U-SHAPE	CLASS ROOM	ROUND	THEATRE
1. Jacob Gade Salen 1	YES	135		36	86	64	104
2. Jacob Gade Salen 2	YES	110		34	70	50	104
Jacob Gade Salen 1 + 2	YES	246		70	185	138	280
3. Intermezzo 1	YES	53		18	24	20	30
4. Intermezzo 2	YES	53		18	24	20	30
Intermezzo 1 + 2	YES	107		38	64	44	80
5. Tango Jalousi	YES	79		26	40	32	60
6. El Matador	YES	38		18	18		28
7. La Camarone	YES	25	14				
8. Romanesca	YES	25	14				
Teatersalen (Vejle musikteater)							1100



SCANDIC KOLDING

Facts

- 186 rooms
- Meeting and conference facilities up to 650 pers
- 18 meeting rooms
- Free parking
- Renovated 2012

Location

- Centrally located between the cities of Vejle, Fredericia and Kolding in Jutland
- Half an hour away from Billund airport
- Easy to get to by car



SCANDIC KOLDING



NAME	DAY-LIGHT	M2	BOARD ROOM	U-SHAPE	CLASS ROOM	ROUND	ISLAND	THEATRE
1. Odin	YES	200		50	120	70	70	200
2. Frigg	YES	100		30	60	40	40	100
3. Tor	YES	100		30	60	40	40	100
4. Freja	YES	200		45	104	70	60	200
Odin + Frigg	YES	300		80	180	120	120	318
Odin + Frigg + Tor	YES	400		110	250	200	200	418
Odin + Frigg + Tor + Freja	YES	600			350	300	300	650
5. Balder 1	YES	20	8					
6. Balder 2	YES	20	8					
Balder 1 + 2	YES	40		16	18			25
7. Brage 1	YES	20	8					
8. Brage 2	YES	20	8					
Brage 1 + 2	YES	40		16	18			25
9. Ull 1	YES	20	8					
10. Ull 2	YES	20	8					
Ull 1 + 2	YES	40		16	18			25
11. Tyr 1	YES	20	8					
12. Tyr 2	YES	20	8					
Tyr 1 + 2	YES	40		16	18			25
13. Heimdal 1	YES	20	8					
14. Heimdal 2	YES	20	8					
Heimdal 1 + 2	YES	40		16	18			25
15. Think Tank	YES	30	8					
16. Mimer	YES	41	17					
17. Sif	YES	64		22	30		30	60
18. Mjølner	YES	86		27	48		40	75



SCANDIC OLYMPIC, ESBJERG

Facts

- 147 rooms
- Meeting and conference facilities up to 30 pers
- Parking for a fee

Location

- Located centrally in Esbjerg. Shop on Kongensgade, Denmark's longest street, or take a ferry to Fanø island



SCANDIC OLYMPIC, ESBJERG



NAME	DAY-LIGHT	M2	BOARD ROOM	U-SHAPE	CLASS ROOM	THEATRE
1. Olympic	YES	40	15	20	25	30



SCANDIC REGINA, HERNING

Facts

- 142 rooms
- Meeting and conference facilities up to 150 pers
- Banquet capacity 170 pers
- Free parking

Location

- Located close to Herning city center and close to the train station/Herning Congress Center.



Scandic

SCANDIC REGINA, HERNING



NAME	DAY-LIGHT	M2	BOARD ROOM	U-SHAPE	CLASS ROOM	THEATRE
1. Rex	YES	146				150
2. Elia	YES	44	18	20	16	25
3. Fønnesbech	YES	89		18	70	90
4. Dalgas	YES	52	16	35	20	30
5. Grupperum 1220	YES	17	8			
6. Grupperum 1221	YES	17	8			
7. Grupperum 1222	YES	17	8			



SCANDIC THE REEF, FREDERIKSHAVN

Facts

- 210 rooms
- Meeting and conference facilities up to 220 pers
- Parking for a fee

Location

- Located in the heart of Frederikshavn and has a 1500 kvm Caribbean water park with outdoor spa and sauna.
- A unique conference section decorated with a touch of the Caribbean and all meeting rooms have island view.



SCANDIC THE REEF, FREDERIKSHAVN



NAME	DAY-LIGHT	M2	BOARD ROOM	U-SHAPE	CLASS ROOM	THEATRE
1. Tordenskjold	NO	240		50	180	210
2. Krudttårnet	YES	70		26	45	
3. Nedre Skanse	YES	45		15	20	
4. Hornværket	YES	70		26	45	
5. Dynekilen	NO	45		15	20	
6. Capitainen	YES	70		26	45	
7. Generaladmiralen	YES	70		26	45	
8. Oberst Lieutenanten	YES	70		26	45	
9. Aaret 1717	YES	33		15	20	
10. Lövendahls Gallery	NO	45		15	20	
11. Ormen	YES	45		15	20	
12. Frederik IV	YES	45		15	20	
13. Executive	YES	75	15			
14. Pakhusstuen	YES	70		20	45	



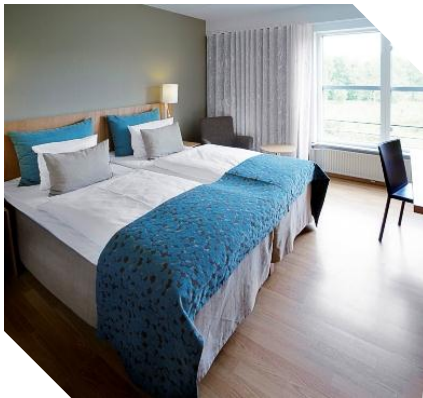
SCANDIC SILKEBORG

Facts

- 117 rooms
- Meeting and conference facilities up to 330 pers
- Banquet capacity 330 pers
- Free parking

Location

- Located in idyllic Silkeborg, overlooking Silkeborg Langsø.



SCANDIC SILKEBORG



NAME	DAY-LIGHT	M2	BOARD ROOM	U-SHAPE	CLASS ROOM	ROUND	THEATRE
1. Slåensø	YES	85		25	32		60
2. Borresø	YES	128		35	70	50	130
Slåensø + Borresø	YES	213		70	142	70	70
3. Julsø	YES	116		30	60	50	120
4. Langsø	YES	116		30	60	50	120
Julsø + Langsø	YES	232		60	170	80	260
5. Cafe Vildanden	YES	300			180		330
6. Grupperum 5	YES	20		8	12		16
7. Grupperum 6	YES	20		8	12		16
Grupperum 5 + 6	YES	40		16	24		32
8. Grupperum 7	YES	26		10	14		19
9. Grupperum 8	YES	20		8	12		16
10. Grupperum 9	YES	20		8	12		16
Grupperum 8 + 9	YES	40		16	24		32
11. Grupperum 10	YES	26		10	14		19
12. Grupperum 11	NO	17		8	12		16



SCANDIC SØNDERBORG

Facts

- 102 rooms
- Meeting and conference facilities up to 195 pers
- Banquet capacity 150 pers
- Free parking

Location

- The hotel is located close to the city centre of Sønderborg, the German border and Sønderborg Airport. Great bus, train and ferry connections nearby.



SCANDIC SØNDERBORG



NAME	DAY-LIGHT	M2	BOARD ROOM	U-SHAPE	CLASS ROOM	THEATRE
1. Als	YES	150		40	110	195
2. Ærø	YES	20		18	22	
3. Drejø	YES	35		24	38	
4. Lyø	YES	22		18	24	
5. Grupperum 1	YES	16	10			
6. Grupperum 2	YES	16	10			
7. Grupperum 3	YES	16	10			
8. Grupperum 4	YES	16	10			
9. Grupperum 5	YES	16	10			
10. Grupperum 6	YES	16	10			
11. Grupperum 7	YES	16	10			



SCANDIC AARHUS VEST

Facts

- 151 rooms
- Meeting and conference facilities up to 250 pers
- Banquet capacity 180 pers
- Free parking

Location

- Located 10 minutes from the city centre of Aarhus and close to access roads



SCANDIC AARHUS VEST



NAME	DAY-LIGHT	M2	BOARD ROOM	U-SHAPE	CLASS ROOM	THEATRE
1. Aros 1	YES	80		24	50	75
2. Aros 2	YES	80		22	40	70
3. Aros 3	YES	80		22	40	70
4. Aros 4	YES	70		20	36	60
Aros 1 + 2	YES	160			90	145
Aros 3 + 4	YES	150			76	130
Aros 1 + 2 + 3	YES	240			130	215
Aros 1 + 2 + 3 + 4	YES	310			170	250
5. Bispehaven 1	YES	20	10			
6. Bispehaven 2	YES	20	10			
7. Bispehaven 3	YES	28	12	22	40	
Bispehaven 1 + 2	YES	40			16	35
Bispehaven 1 + 2 + 3	YES	68				60
8. Ryhaven 1	YES	20	10			
9. Ryhaven 2	YES	15	8			
10. Ryhaven 3	YES	15	8			
11. Ryhaven 4	YES	15	8			
12. Ryhaven 5	YES	15	8			
13. Ryhaven 6	YES	15	8			
14. Ryhaven 7	YES	15	8			
15. Ryhaven 8	YES	15	8			
16. Ryhaven 9	YES	15	8			



SCANDIC PLAZA AARHUS

Facts

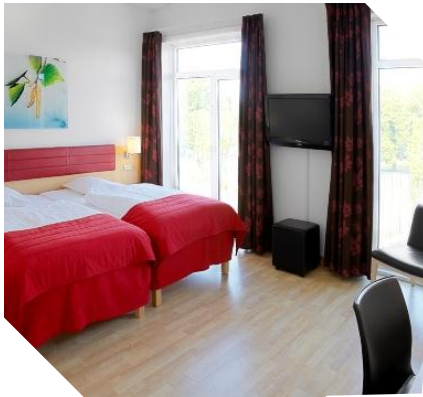
- 162 rooms
- Meeting and conference facilities up to 75 pers
- Banquet capacity 60 pers
- Parking for a fee

Location

- Located in central Aarhus, close to the trainstation and main attractions.



SCANDIC PLAZA AARHUS



NAME	DAY-LIGHT	M2	BOARD ROOM	U-SHAPE	CLASS ROOM	THEATRE
1. Havmanden 1	YES	50		22	24	50
2. Havmanden 2	YES	30		14	12	25
Havmanden 1+2	YES	80		36	38	75
3. Agnethe 1	YES	45		20	22	45
4. Agnethe 2	YES	30		12	10	25
Agnethe 1+2	YES	75		32	32	70



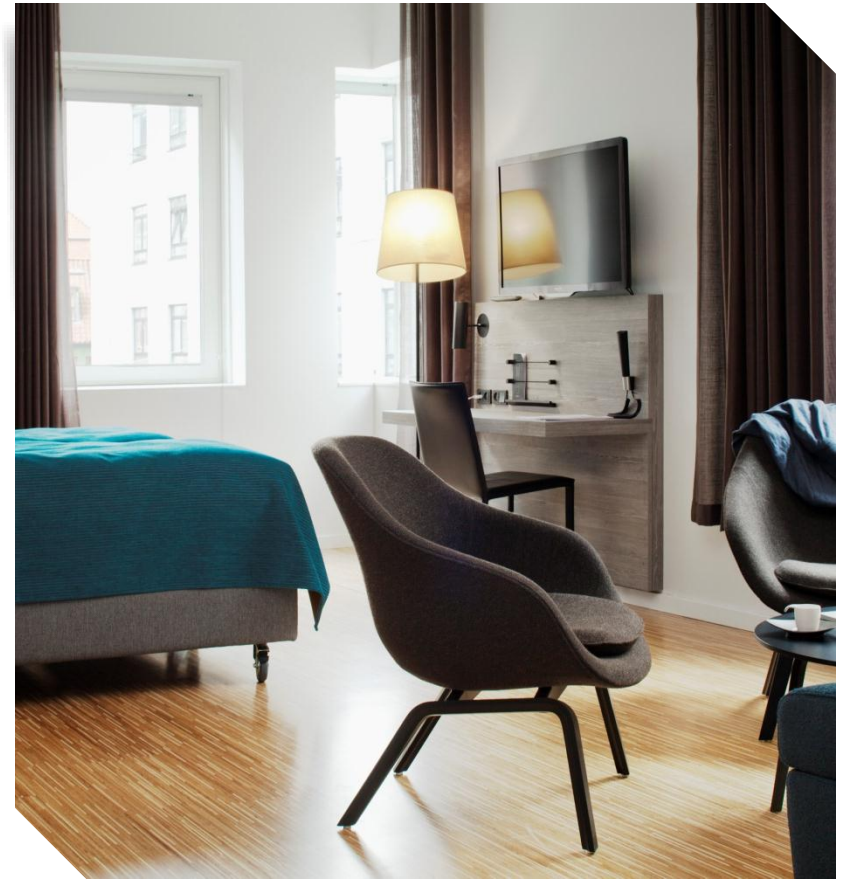
SCANDIC AARHUS CITY

Facts

- 228 rooms
- Meeting and conference facilities up to 240 pers
- Parking for a fee
- Opened June 2012

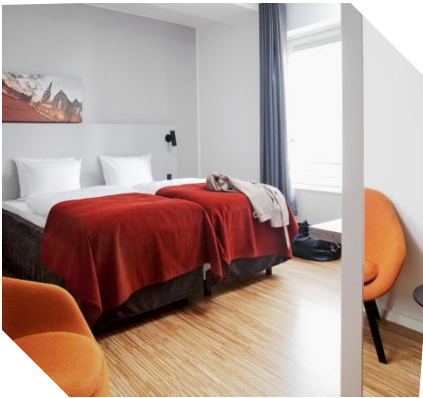
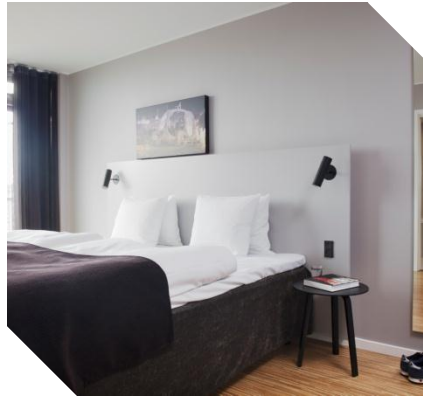
Location

- Located in the city centre of Aarhus within walking distance of beautiful sights and great shopping.



Scandic

SCANDIC AARHUS CITY



NAME	DAY-LIGHT	M2	BOARD ROOM	U-SHAPE	CLASS ROOM	ROUND	THEATRE
1. Riis Skov 1	YES	60	28	22	32	5x6 pers/ 4x8 pers	60
2. Riis Skov 2	YES	69	28	20	36	3x6 pers/ 3x8 pers	44
Riis Skov 1 + 2	YES	129	56	40	70	10x6 pers/ 6x8 pers	120
3. Moesgaard 1	NO	85	26	24	42	5x6 pers/ 4x8 pers	80
4. Moesgaard 2	YES	86	26	24	42	5x6 pers/ 4x8 pers	80
5. Moesgaard 3	YES	91	34	30	60	5x6 pers/ 4x8 pers	120
Moesgaard 1 + 2	YES	171	54	48	84	12x6 pers/ 10x8 pers	180
Moesgaard 2 + 3	YES	177			122	12x6 pers/ 10x8 pers	180
Moesgaard 1 + 2 + 3	YES	262			182	24x6 pers/ 23x8 pers	280
6. Bellevue (Think Tank)	YES	33	11				
7. Marselisborg	NO	20	12				20
8. Tangkrogen	NO	18	8 / 12				16
9. Ørnereden	NO	20	10				20



SCANDIC BYGHOLM PARK, HORSSENS

Facts

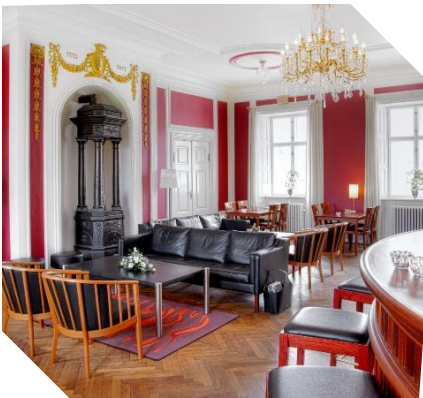
- 142 rooms
- Meeting and conference facilities up to 650 pers
- Banquet capacity 450 pers
- Free parking

Location

- A refurbished manor house in central Horsens, close to Horsens city



SCANDIC BYGHOLM PARK, HORSSENS



NAME	DAY-LIGHT	M2	BOARD ROOM	U-SHAPE	CLASS ROOM	ROUND	THEATRE
1. Birk 1	YES	40		12	18		25
2. Birk 2	YES	32		10	16		20
Birk 1 + 2	YES	72		30	40		60
3. Kastanje 1	YES	41		10	12		18
4. Kastanje 2	YES	51		16	20		30
Kastanje 1 + 2	YES	92		32	50		80
5. Bøg	YES	54		22	28		45
6. Eg	YES	60		26	38		50
7. Fyr	YES	92		32	48		80
8. Gran	YES	20	8				
9. Syd	YES	53		16	25		
10. Kongressal 1	YES	312		84	180	170	250
11. Kongressal 2	YES	364		96	200	200	300
Kongressal 1 + 2	YES	676			450	400	650
12. Grupperum 1	NO	23	8				
13. Grupperum 2	NO	37	8				
14. Grupperum 3	No	36	8				
15. Grupperum 4	YES	14	8				
16. Grupperum 301	YES	15	4				
17. Grupperum 302	YES	15	4				
18. Grupperum 303	YES	15	4				
19. Grupperum 304	YES	15	4				
20. Grupperum 305	YES	15	4				
21. Grupperum 306	YES	15	4				



SCANDIC KONGENS EGE, RANDERS

Facts

- 130 rooms
- Meeting and conference facilities up to 400 pers
- Banquet capacity 220 pers
- Free parking

Location

- Located in the middle of the forrest in Randers and close to Gudenåen.
- 0,5 km from Randers city center and 2 km from the train station.



SCANDIC KONGENS EGE, RANDERS



NAME	DAY-LIGHT	M2	BOARD ROOM	U-SHAPE	CLASS ROOM	ROUND	THEATRE
1. Frederik 1	YES	83		25	45	30	80
2. Frederik 2	YES	83		25	45	30	80
3. Frederik 3	YES	83		25	45	30	80
Frederik 2 + 3	YES	167		45	90	60	160
Frederik 1 + 2 + 3	YES	250			135	90	240
4. Christian 1	YES	112		30	55	50	100
5. Christian 2	YES	112		30	55	50	100
6. Christian 3	YES	112		30	55	50	100
7. Christian 4	YES	112		30	55	50	100
Christian 1 + 2	YES	224		50	110	100	200
Christian 3 + 4	YES	224		50	110	100	200
Christian 1 + 2 + 3 + 4	YES	448			220	220	400
8. Grupperum 10	YES	25	12				
9. Grupperum 11	YES	25	12				
10. Grupperum 12	YES	20	8				
11. Grupperum 13	YES	25	12				
12. Grupperum 14	YES	25	12				
13. Grupperum 15	YES	25	12				
14. Grupperum 16	YES	25	12				



SCANDIC AALBORG

Facts

- 101 rooms
- Meeting and conference facilities up to 300 pers
- Banquet capacity 160 pers
- Free parking

Location

- Centrally located in the middle of the northern part of Jutland close to the highway and the airport.
- 4 km from Aalborg City centre, 13 km from Aalborg airport and 4 km from the trainstation



SCANDIC AALBORG



NAME	DAY-LIGHT	M2	BOARD ROOM	U-SHAPE	CLASS ROOM	THEATRE
1. Valmue	YES	80		28	50	70
2. Kløver	YES	80		28	50	70
3. Lyng	YES	80		28	50	70
Valmue + Kløver	YES	160			100	175
Valmue + Kløver + Lyng	YES	240			160	300
4. Bøg	YES	45		18	24	30
5. Eg	YES	45		18	24	30
Bøg + Eg	YES	90		30	40	60
6. Ahorn	YES	45		18	24	30
7. Gran	YES	20	8			
8. Lærk	YES	20	8			
9. Fyr	YES	20	8			

